

**INSTALLATION INSTRUCTIONS:  
66-75 Bronco Adjustable Tracking Bar Drop Bracket**



865.938.6696 www.dufftuff.com  
6609 Bronco Ln.  
Knoxville, TN 37921

**PART # 5405**

**CONTENTS:**

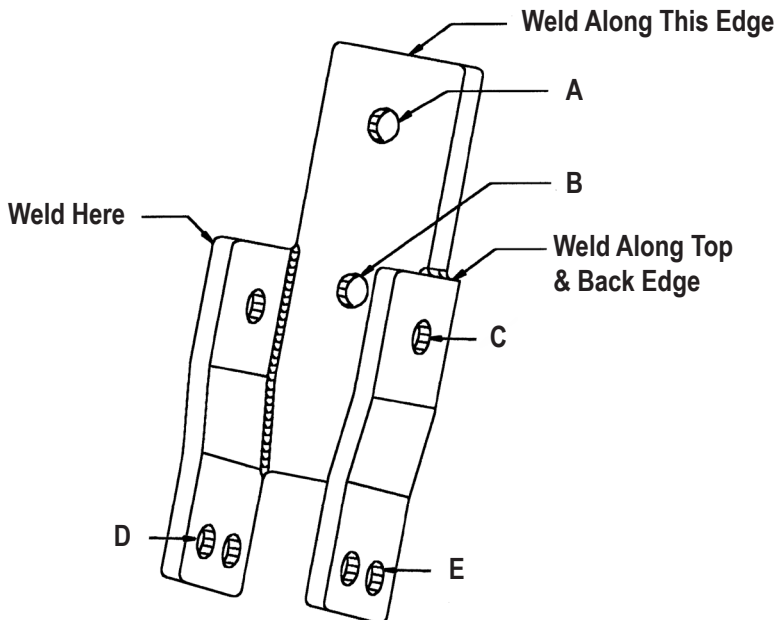
- 1- Blue powder-coated drop bracket
- 1- 9/16" x 3 1/2" (long) bolt and NF Nyloc nut
- 1-1/2" x 2" (medium) bolt
- 1-1/2" x 1 1/2" (short) bolt and NC Nyloc nut

1/1 8/15

**Please read all instructions before beginning.**

1. Unbolt the tracking bar and push it down and out of the way.
2. The factory bolt is tack welded; grind off the weld and remove it. Slide the new bracket over the factory mount. The new bracket should be flush mounted on all surfaces. Use the medium bolt to attach the bracket through the original hole. (A)
3. Slide the long bolt through the original tracking bar bracket holes and the drop bracket. Secure with the Nyloc nut. (C)
4. If there isn't one already, drill a hole in the original mounting bracket where the hole (B) is in the new bracket and bolt the bracket in place using the short bolt and nut.
5. Weld the bracket in place along the top three surfaces and at the back, where the bracket is closest to the frame.
6. Attach the tracking bar using the stock bolt. The bracket has 2 holes for attaching the tracking bar, generally hole "D" would be for a 3+ lift, hole "E", for 2". However, the bar can be installed in whichever hole provides the best centering of the axle. This may vary if you have an adjustable track bar. If the hole will not line up with the bracket, have someone turn the steering wheel. This will allow you to align the holes.

NOTE: When your Bronco is lifted, any alignment problems are exaggerated. If your tracking bar bushings are worn, you should replace them with our Part #6108 polyurethane bushings. When the front end is lifted, your alignment goes negative and you will definitely need our replacement Polyurethane "C" bushings part #6004 or #6007. They can correct your caster for the new height. If this isn't enough, we also have Adjustable Radius Arm Drop Brackets or Long Arms.



**LIMITED WARRANTY**

James Duff Inc. warrants our products to the original purchaser to be free from defects in materials and workmanship. Warranty periods begin at the date of purchase and varies by product. Shocks have a limited lifetime warranty. Headers, Radiators and Suspension Products, Power Brake Boosters and Master Cylinders have a one year warranty. Adapters and soft goods such as upholstery, vinyl and rubber products have a 90 day warranty. All warranties are to the original purchaser with proof of purchase only. Such obligations under this warranty shall be limited to the repair or replacement, at JDI's discretion, of any assembly or part which upon examination by JDI proves to be defective. Any costs of removal, installation, reinstallation or freight charges are expressly excluded from this warranty. This warranty covers only manufacturers defects, and does not cover product finish or damage resulting from abuse, misuse, negligence, racing, alteration, accident or damage in transit.

All returns must be pre-authorized by JDEI and accompanied with a Return Goods Authorization Number (RGA) and a dated proof of purchase. Returns must be made within 90 days of purchase, shipped prepaid, packaged in original cartons to prevent damage in shipment and sent to JDI, 6609 Bronco Ln., Knoxville, TN 37921 Returns without an RGA# will be refused.

This warranty is expressly in lieu of all other warranties, expressed or implied, including the implied warranties of merchantability and fitness for use. This warranty gives you specific legal rights including other rights that vary from state to state. Some states do not allow limitations on how long an implied warranty lasts, or do not allow the exclusion of limitation of incidental or consequential damages, so the above limitations and/or exclusions may not apply to you.

**SUSPENSION PRODUCT INFORMATION**

Modifying your vehicle with JDI products to improve off road performance may result in the vehicle handling differently than a factory equipped vehicle. Taller tires will cause the vehicle's speedometer to read slow, so recalibration is required. Use of oversize tires, suspension lifts, body lifts, and other modifications may raise your vehicle's center of gravity, resulting in an increased tendency for the vehicle to pitch and roll during sudden turns or abrupt maneuvering. Failure to drive with extreme care to prevent loss of control or vehicle roll over may result in injury or death. Drive at a reduced speed to ensure your ability to maintain control of the vehicle under all driving conditions. We recommend installing functional roll bars and cages as well as double shocking all vehicles for more safety and stability on or off road. Always wear seat belts when in a vehicle. Consult your owners manual for recommended tire sizes, safety instruction and warnings unique to your vehicle. It is your responsibility to check state and local laws restricting vehicle height to ensure that modifications to your vehicle are legal.

